

The background image shows a person from behind, wearing a headset, sitting at a desk with multiple computer monitors. The screens display various data visualizations, including maps, charts, and lists, suggesting a security or surveillance operations center. The entire image is overlaid with a semi-transparent orange filter.

Guraba Security Surveillance Solution

Security Surveillance Solution

- Video Surveillance Solution
- Video Wall & Display Solution
- Deep Learning Based Ai Solution
- Fire Prevention Solution
- ANPR Camera Solution
- Perimeter Security Solution
- Video Intercom & Access Control
- Video Management Solution
- Two Way Audio Communication
- Access Control Through CCTV
- Smart City Surveillance Solution
- Central Monitoring Solution
(Manage up-to 64,000 Cameras)



Our Partner

**BOSCH****Honeywell****WEBGATE****CNB****AVTECH****HIKVISION®****ahua**
TECHNOLOGY**UNV®**
Uniview Technologies**FSAN****Tiandy**

SECURITY SURVEILLANCE

Video Surveillance Solution

We offer advanced video surveillance solutions to safeguard your property. Our cutting-edge systems provide real-time monitoring and enhanced security for peace of mind. Trust us to deliver reliable and efficient protection tailored to your needs.



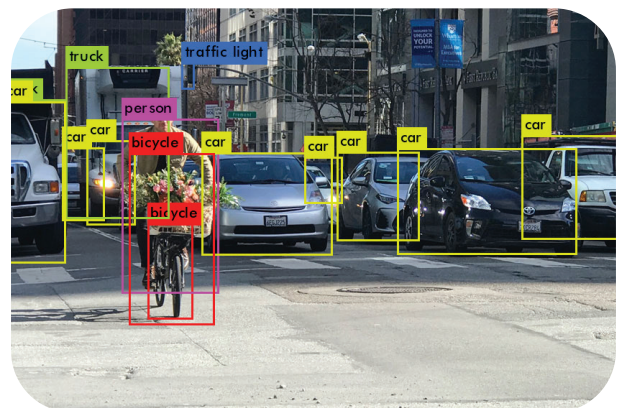
Video Wall & Display Solution

We provide cutting-edge video wall and display solutions for impactful visual experiences. Our systems deliver high-resolution displays, perfect for control rooms, events, and digital signage. Trust us to create dynamic, immersive visuals tailored to your business needs.



Deep Learning Based Ai Solution

Guraba Engineering Ltd. provide deep learning-based AI solutions for precise person and vehicle detection. Our advanced technology ensures accurate real-time identification, enhancing security and surveillance. Trust us for intelligent, automated solutions that improve monitoring and safety.



SECURITY SURVEILLANCE

Fire Prevention Solution

We provide advanced fire prevention solutions to safeguard your property. Our systems provide early detection and real-time alerts to prevent fire hazards before they escalate. Trust us for reliable, proactive fire safety measures tailored to your needs.



ANPR Camera Solution

Guraba Engineering Limited Provide cutting-edge ANPR camera solutions for accurate and efficient license plate recognition. Our advanced systems offer real-time monitoring and data capture for enhanced security and traffic management. Trust us for reliable, high-performance ANPR solutions tailored to your needs.



Perimeter security solution

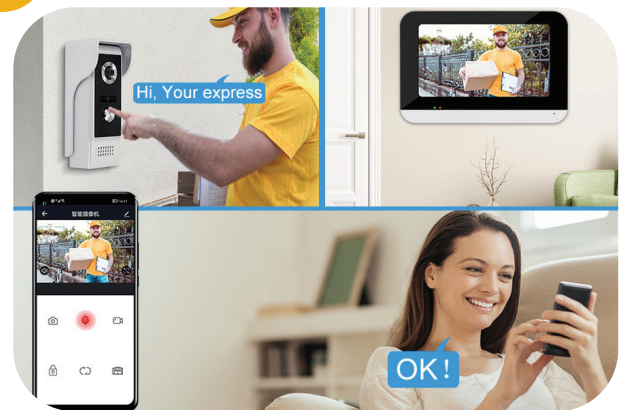
Guraba Engineering specialize in advanced perimeter security solutions to protect your property from unauthorized access. Our systems combine cutting-edge technology with real-time monitoring for maximum protection. Trust us to safeguard your perimeter with reliable and efficient security measures.



SECURITY SURVEILLANCE

Video Intercom & Access Control

We offer an efficient Visitor Management System to streamline check-ins and enhance security. Our system tracks visitor data in real-time, ensuring a smooth and secure experience. Trust us to provide a seamless solution for managing your visitors with ease and accuracy.



Video Management Solution

We provide comprehensive video management solutions to streamline your surveillance operations. Our systems offer real-time monitoring, storage, and easy access to recorded footage for enhanced security. Trust us for efficient, scalable video management tailored to your needs.



Two Way Audio Communication

We specialize in advanced two-way audio communication solutions for clear and reliable interactions. Our systems enable real-time, seamless communication across various environments. Trust us for high-quality, efficient audio solutions tailored to your specific needs.



SECURITY SURVEILLANCE

Smart City Surveillance Solution

We provide innovative Smart City solutions to enhance urban living through technology. Our integrated systems improve efficiency, sustainability, and connectivity in public spaces. Trust us to help build smarter, more resilient cities for the future.



Access Control Through CCTV

We offer Access Control solutions verified through CCTV for enhanced security. Our system allows real-time visual confirmation before granting access, ensuring only authorized individuals enter. Trust us for reliable, CCTV-integrated entry management that boosts safety and control.



Central Monitoring Solution (Manage up-to 64,000 Cameras)

Our CMS (Central Monitoring Solution) is designed to manage up to 64,000 cameras efficiently. With real-time surveillance, advanced analytics, and seamless scalability, we provide comprehensive security oversight. Trust us for robust, centralized monitoring to safeguard large-scale operations.





CONTACT US

Dhaka Head Office

- 📍 House-1286, (1st Floor), Road-10, Avenue-2, Mirpur DOHS, Dhaka-1216, Bangladesh
- ☎ +880 1710 629 168
- ✉ mahabur.rahman@guraba.com.bd
arifur.rahman@guraba.com.bd
raju@guraba.com.bd
- 🌐 www.guraba.com.bd

Chittagong Office

- 📍 Chowdhury Mansion Madraji Road, Navy Hospital gate, North Haliashahar, Chittagong.
- Warehouse**
- 📍 Dhaka, Chittagong.

Sylhet Office-1

- 📍 House No: 32/1, Airport Road, East Choukidekhi, Ambar Khana, Sylhet.

Sylhet Office-2

- 📍 Zaynab House, Sherpur R/A area, Afruzganj bazar, Moulvibazar, Sylhet.