



# GURABA COMPANY PROFILE.

# WELCOME TO **GURABA** **ENGINEERING**

Guraba Engineering Limited is a solutions, product, and service-based company specializing in Fire Safety, Security Solutions, Substations, Electrical, Mechanical, and Managed Services.

We offer comprehensive expertise across these fields, delivering customized solutions to meet diverse industrial needs. With a focus on innovation and reliability, Guraba Engineering is committed to ensuring safety, efficiency, and top-quality service for all our clients.





# CONTENT

About Company

04-05

Message from MD

06

Message from Chairman

07

Our Mission

08

Fire Safety & Security Solution

09-14

Power & Energy Solution

15-18

Security Surveillance Solution

19-24

Access Control Solution

25-30

PAVA Solution

31-34

Smart Display Solution

35-38

Manage Services

39-50

Automation Solution

51-52

Partner & Associate

53-56

Product & Services

57

Our Valuable Client

58-62

# ABOUT GURABA

GURABA Engineering Ltd., one of the prominent engineering business house in Bangladesh, have been continuing its business for more than 14 years as an Engineering Solution provider, Consultancy provider, Importer and Marketer of wide range of Fire Safety & Security solution, Substation, Electrical, Mechanical, CCTV Surveillance Solution, PAVA Solution & different types of industrial products. GURABA have earned the dependability and reliability for quality product, service and support throughout the country since its inception.



## Vision

Our vision at GURABA Engineering Ltd. is to be the leading provider of advanced fire safety and security surveillance solutions in Bangladesh, ensuring the highest standards of protection and innovation. We aim to create safer environments through reliable, cutting-edge technology and exceptional service.



## Mission

Our mission is to deliver exceptional fire safety, security surveillance, and managed services that protect and enhance the efficiency of our clients' operations. We are dedicated to providing innovative, dependable solutions that safeguard lives, assets, and critical infrastructure.



### Quality Assurance

We ensure quality products and services with our strong technical team. All necessary products are Internationally certified like UL/LPCB/VDS/Applus/etc. We ensure the product replacement and services during the warranty period without any hesitation. Our technical service team are available 24/7 hours

### Infrastructure

We have a well equipped infrastructure that assists us in delivering the best possible product. We maintain strong organization to ensure the best quality in every steps of work flow.

### Clientele

The credit of our success of more than 14 years goes to our clients for having faith on Guraba. We always strive to give the best possible products to our customers located in every nook and corner of Bangladesh. Our customers place repeated orders in bulk that speaks about our dependability

### Year of Establishment

GURABA Engineering Ltd. is a Legal registered company of Bangladesh Date of Incorporation: 18 February, 2009



GURABA Engineering Ltd, One of the prominent engineering business house in bangladesh.





## MESSAGE FROM MANAGING DIRECTOR

“High achievement always takes place in the framework of high expectation”

Innovation and striving for new has been the core visions of Guraba Engineering, Bangladesh and on the process, we "Guraba Engineering" have been leading the market or rather creating the market for many new arena of business. We have always been focused on being the market maker with high standards of business ethics. And in the days to come we wish to continue strengthening our footprint with continuous improvisation and strategic addition of new technologies in the market. In this way, we want to secure our position for being the pioneer of introducing various new technologies and services in the market.

Needless to mention, that we are based on the core values of our social responsibility. And “customer satisfaction” remains to be one of the most important factor in our business journey. We will make sure we achieve the highest standard on that and leave no stones unturned. Thus, we remain committed to hard-work and fair-play to market we operate.

**Engr. Mahabur Rahman**  
Managing Director





## MESSAGE FROM CHAIRMAN

“Great Discoveries and achievements invariably involved the cooperation of many minds”

On the occasion of Guraba Engineering stepping into the new millennium, it gives me immense pleasure and pride to state that the Group has attained impressive and sustained growth over the past decade. On behalf of the Guraba Engineering, I would like to express my most profound gratitude to all business partners and clients who have shown full confidence towards us. It gives me great pleasure to welcome you to the Guraba fraternity which represents over 50 top multinational organizations crosswise over 20 countries around the world, who are our business partners and work with us in our endeavor towards building an international exposure and reputation.

The mission of our Company is to provide best services to make life easier. Our goal is to foster a culture that values perseverance and consistent improvement. To get where we are today, we have devoted all our endeavors into the recognition of the Company.

**Engr. Arifur Rahman Sarker**  
Chairman





# OUR MISSION

## — Behind The Scenes At Beyond —



### Integrity

We consistently demonstrate highest ethical standards in our actions. We honor our agreements and are honest in our communications.

### Quality

Quality is ingrained in the work of our colleagues and all our values. We have a relentless passion for quality in everything we do.



### Leadership

We lead by example and establish an environment of continuous improvement, provide opportunities for people to grow, both personally and professionally.

### Respect for People

We consistently demonstrate highest ethical standards in our actions. We honor our agreements and are honest in our communications.



### Customer

We exceed customer expectations for value and service. We build and maintain customer relationships and ensure long-term satisfaction.

### Community

We play an active role in making our community a safe and better place to live and work



### Teamwork

We believe in teamwork and the limitless possibilities of collaborative energy. We achieve excellence by putting collective goals ahead.

### Innovation

We constantly seek innovative ways to Enhance our Products and Services and provide value to our customers.





# **Guraba Fire Safety & Security Solution**



## Fire Safety & Security Solution

- Fire Alarm & Detection System
- Fire Stand Pipe & Hydrant System
- Sprinkler System
- Fire Suppression System
- Fire Rated Door
- Fire Curtain
- Smoke Management System
- Fire Fighter Equipment
- Fire Extinguisher & Accessories



## Our Partner for Fire Detection

**BOSCH****HOCHIKI****Honeywell**

## Our Partner for Fire Protection



## Fire Alarm System

### ➤ Conventional Fire Alarm System:

Zones are set up in a building, and when an alarm is triggered, the system can identify the general area of the fire, but not the exact location.

### ➤ Addressable Fire Alarm System:

More advanced system where each device has a unique address, allowing the exact location of the alarm trigger to be identified.

### ➤ Wireless Fire Alarm Systems:

Uses wireless technology for communication between detectors and the control panel, making it easier to install in existing structures.



## Fire Detection System

### ➤ Smoke Detector:

#### \*Ionization Smoke Detectors:

Detect small particles from flaming fires.

#### \*Photoelectric Smoke Detectors:

Respond to larger particles from smoldering fires.

#### \*Dual-Sensor Detectors:

Combine both ionization and photoelectric sensors for improved detection.

### ➤ Heat Detectors

Detects a rise in temperature and is typically used in areas where smoke detectors might give false alarms, like kitchens or garages.

### ➤ Carbon Monoxide (CO) Detectors

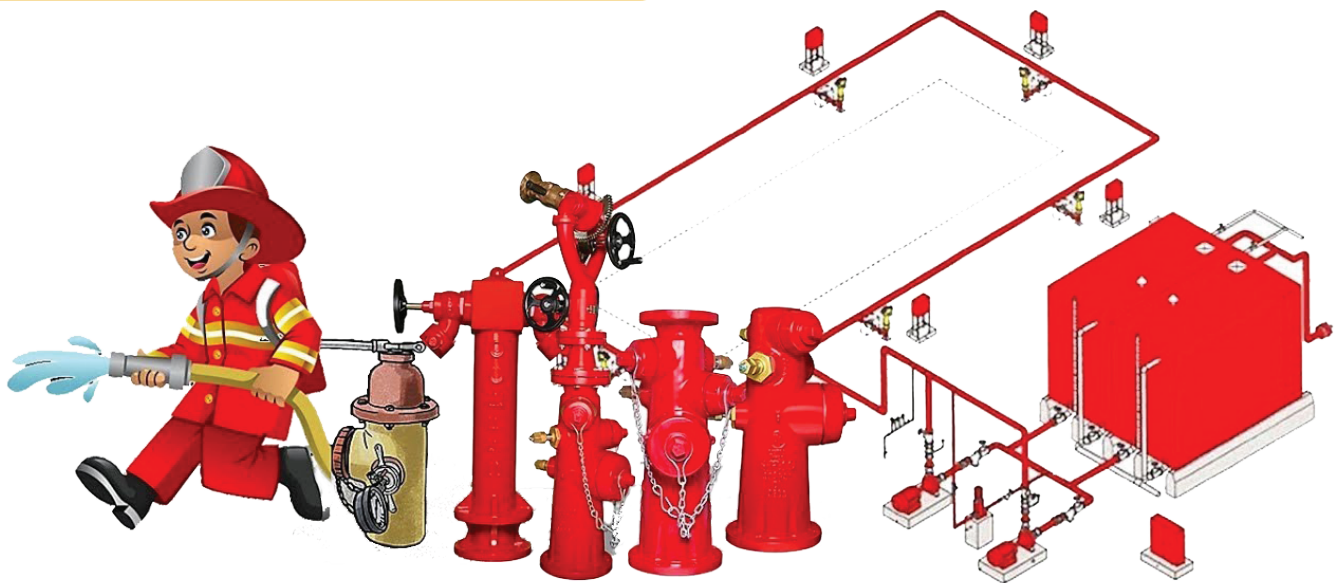
Detects the presence of carbon monoxide, a deadly gas produced by incomplete combustion, often found in fire environments.

### ➤ Motorized Beam Detector

Detect fire and smoke and send you alerts through an alarm and by making a sound.



## Stand Pipe & Hydrant System



Standpipe systems are a network of piping in a building fed by a water supply and featuring numerous outlets for the water. They are essentially indoor fire hydrants that allow occupants, firefighters, or both to access water to fight fires.

Fire hydrant installation consists of a system of pipe work connected directly to the water supply main to provide water to every hydrant outlet and is intended to provide water for the firemen to fight a fire. The water is discharged into the fire engine from which it is then pumped and sprayed over fire.

## Sprinkler System



Fire sprinkler system is an active fire protection method, consisting of a water supply system providing adequate pressure and flowrate to a water distribution piping system, to which fire sprinklers are connected. Although initially used only in factories and large commercial buildings, systems for homes and small buildings are now available at a cost-effective price.



## Fire Suppression System

A fire suppression system is an integral part of any fire protection infrastructure.

The types of fire suppression systems include **clean agent, chemical clean agents, inert gases, CO2, and water-based systems**. Each type of suppression can be used in different situations, like a warehouse or commercial kitchen, depending on the needs and location of a business. Some systems are better suited for businesses with sensitive electronics, while others work best with hazardous materials.



## Fire Rated Door

Fire resistant door sets, commonly called fire doors, are an integral component of fire protection in buildings and classified as passive fire protection systems.

Fire-rated doors are required to be self-closing and positive latching. They must remain closed during a fire to protect the means of egress. Fire-rated doors are more common in commercial buildings than residential structures.



## Fire Curtain

Fire-rated curtain walls are carefully engineered and manufactured systems that defend against the transfer of flames, smoke and radiant and conductive heat. They include fire-resistive glass and frames, as well as component parts, all of which are designed and confirmed via testing to work together.









# **Guraba Power & Energy Solution**

## Power & Energy Solution



- Substation Solution
- Solar Panel System
- Maintenance & Consulting
- LT Switchgear & Control Panel
- All Electrical Solution





## Substation Solution

Guraba Engineering Limited is your expert partner for ensuring the safe and environmentally responsible operation of high voltage electrical systems.

Our team also provides essential maintenance and repair services for critical components like Load Tap Changers (LTCs), helping maintain reliable power distribution. Whether you need proactive leak detection, critical repairs, or comprehensive high voltage consulting, Substation Solutions has the expertise to keep your operations running smoothly and safely.



## Solar Panel System

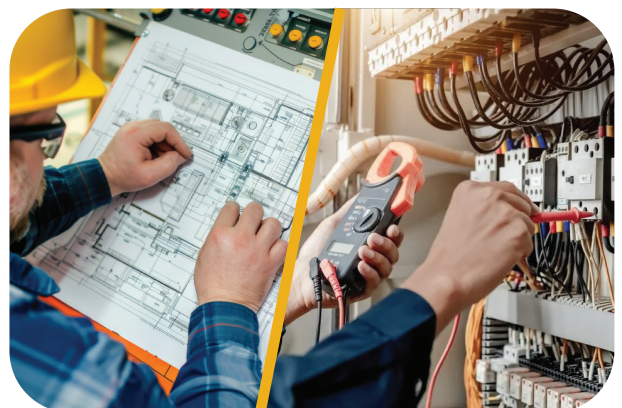
Solar panels are those devices which are used to absorb the sun's rays and convert them into electricity or heat.

This energy can be used to generate electricity or be stored in batteries or thermal storage.



## Maintenance & Consulting

Guraba Engineering limited provide to your electrical consultant. Our professional electrical engineers can offer a variety of consultation services to increase your facility's electrical safety, reliability and efficiency, and get you into compliance with relevant standards.





## LT Switchgear & Control Panel



LT switchgear panel refers to the low-tension panel that is being manufactured and applied for controlling the distribution systems and power control of AC. This type of panel is mainly used in the indoor and outdoor substation, industrial enterprise, commercial or residential buildings that distribute power

## All Electrical Solution



### Electrical installation

Professional and prompt installation of all domestic, commercial, industrial and rural lighting and power.



### Electrical maintenance

Scheduled preventative and reactive maintenance of domestic, commercial and industrial electrical systems and equipment.



### Electrical supplies

We can supply and install All electrical equipment at very competitive prices.



The background image shows a person from behind, wearing a headset, sitting at a desk with multiple computer monitors. The screens display various data visualizations, including maps, charts, and lists, suggesting a security or surveillance operations center. The entire image is overlaid with a semi-transparent orange filter.

# **Guraba Security Surveillance Solution**

## Security Surveillance Solution

- Video Surveillance Solution
- Video Wall & Display Solution
- Deep Learning Based Ai Solution
- Fire Prevention Solution
- ANPR Camera Solution
- Perimeter Security Solution
- Video Intercom & Access Control
- Video Management Solution
- Two Way Audio Communication
- Access Control Through CCTV
- Smart City Surveillance Solution
- Central Monitoring Solution  
(Manage up-to 64,000 Cameras)



## Our Partner

**BOSCH****Honeywell****WEBGATE****CNB****AVTECH****HIKVISION®****ahua**  
TECHNOLOGY**UNV®**  
Uniview Technologies**FSAN****Tiandy**



# SECURITY SURVEILLANCE

## Video Surveillance Solution

We offer advanced video surveillance solutions to safeguard your property. Our cutting-edge systems provide real-time monitoring and enhanced security for peace of mind. Trust us to deliver reliable and efficient protection tailored to your needs.



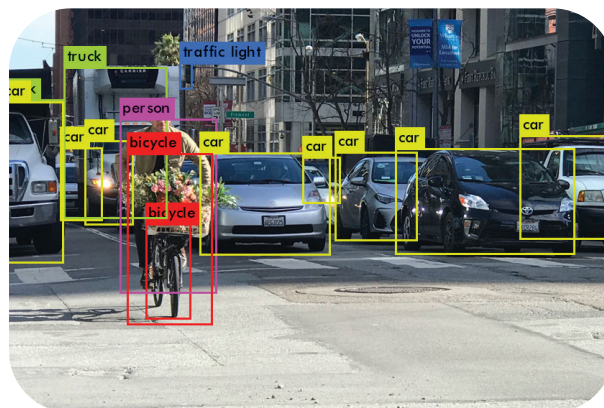
## Video Wall & Display Solution

We provide cutting-edge video wall and display solutions for impactful visual experiences. Our systems deliver high-resolution displays, perfect for control rooms, events, and digital signage. Trust us to create dynamic, immersive visuals tailored to your business needs.



## Deep Learning Based Ai Solution

Guraba Engineering Ltd. provide deep learning-based AI solutions for precise person and vehicle detection. Our advanced technology ensures accurate real-time identification, enhancing security and surveillance. Trust us for intelligent, automated solutions that improve monitoring and safety.



# SECURITY SURVEILLANCE

## Fire Prevention Solution

We provide advanced fire prevention solutions to safeguard your property. Our systems provide early detection and real-time alerts to prevent fire hazards before they escalate. Trust us for reliable, proactive fire safety measures tailored to your needs.



## ANPR Camera Solution

Guraba Engineering Limited Provide cutting-edge ANPR camera solutions for accurate and efficient license plate recognition. Our advanced systems offer real-time monitoring and data capture for enhanced security and traffic management. Trust us for reliable, high-performance ANPR solutions tailored to your needs.



## Perimeter security solution

Guraba Engineering specialize in advanced perimeter security solutions to protect your property from unauthorized access. Our systems combine cutting-edge technology with real-time monitoring for maximum protection. Trust us to safeguard your perimeter with reliable and efficient security measures.

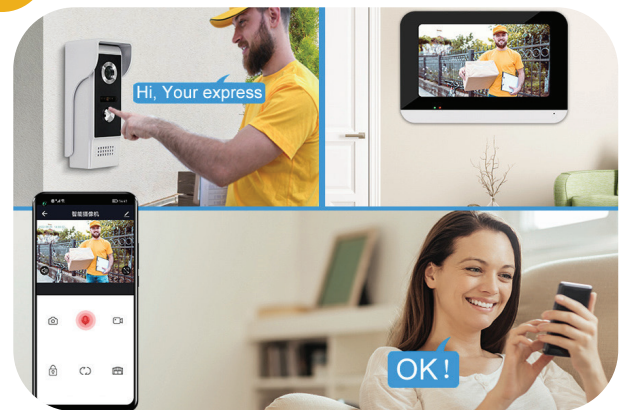




# SECURITY SURVEILLANCE

## Video Intercom & Access Control

We offer an efficient Visitor Management System to streamline check-ins and enhance security. Our system tracks visitor data in real-time, ensuring a smooth and secure experience. Trust us to provide a seamless solution for managing your visitors with ease and accuracy.



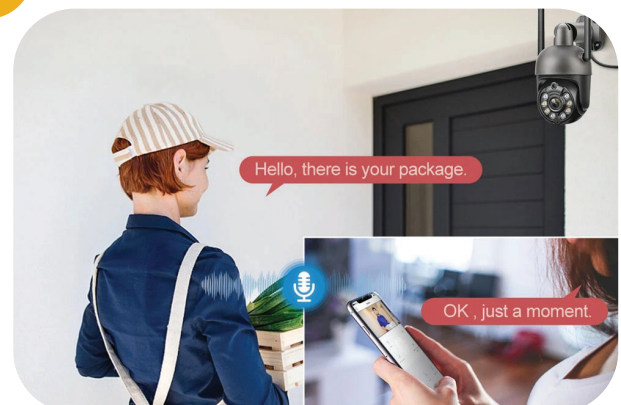
## Video Management Solution

We provide comprehensive video management solutions to streamline your surveillance operations. Our systems offer real-time monitoring, storage, and easy access to recorded footage for enhanced security. Trust us for efficient, scalable video management tailored to your needs.



## Two Way Audio Communication

We specialize in advanced two-way audio communication solutions for clear and reliable interactions. Our systems enable real-time, seamless communication across various environments. Trust us for high-quality, efficient audio solutions tailored to your specific needs.



# SECURITY SURVEILLANCE

## Smart City Surveillance Solution

We provide innovative Smart City solutions to enhance urban living through technology. Our integrated systems improve efficiency, sustainability, and connectivity in public spaces. Trust us to help build smarter, more resilient cities for the future.



## Access Control Through CCTV

We offer Access Control solutions verified through CCTV for enhanced security. Our system allows real-time visual confirmation before granting access, ensuring only authorized individuals enter. Trust us for reliable, CCTV-integrated entry management that boosts safety and control.



## Central Monitoring Solution (Manage up-to 64,000 Cameras)

Our CMS (Central Monitoring Solution) is designed to manage up to 64,000 cameras efficiently. With real-time surveillance, advanced analytics, and seamless scalability, we provide comprehensive security oversight. Trust us for robust, centralized monitoring to safeguard large-scale operations.







# **Guraba Access Control Solution**

## Access Control Solution

- Face Recognition Solution
- PIN, Card & Fingerprint Type
- IRIS Type Access Control
- Employee Attendance Facility
- Biometric Facility
- Access control software & hardware
- Tripod and Turnstiles
- Automatic Barrier System
- Road Blockers & Hydraulic Bollard
- Archway Gate
- Baggage Scanner



## Our Partner

**VIRDI****SUPrema****CMITECH**  
IMAGING EXPERTS**ZKTeco****HIKVISION®****FaceGo****ANVIZ**  
POWERING A SMARTER WORLD**ACTAtek**



# ACCESS CONTROL

## Face Recognition Solution

We offer cutting-edge face recognition solutions for enhanced security and access control. Face Recognition technology provides accurate, real-time identification for seamless user verification. Trust us to provide the highest level of this kind solution for your business.



## PIN, Card & Fingerprint Type

We provide advanced access control solutions using PIN, card, and fingerprint technology. Our systems offer secure, multi-factor authentication for enhanced safety and convenience. Trust us to deliver reliable, customizable access solutions that suit your security needs.



## IRIS Type Access Control

Guraba provide specialize solution IRIS-based access control systems for unmatched security and accuracy. Our cutting-edge technology ensures precise, contactless identification, offering a seamless and secure user experience. Trust us to provide the highest level of biometric access control for your business.



# ACCESS CONTROL

## Employee Attendance Facility

Guraba Engineering Ltd. provide a seamless employee attendance system to simplify tracking and management. Our solution offers accurate, real-time attendance monitoring for enhanced productivity and efficiency.



## Biometric Facility

Guraba Engineering Limited offer advanced biometric solutions for secure and efficient identification. Our systems use fingerprint, facial recognition, and other biometric data to ensure accurate, real-time access control. Trust us for cutting-edge technology that enhances security and simplifies operations.



## Access control software and hardware

We provide comprehensive access control software and hardware solutions for secure facility management. Our systems integrate seamlessly to offer precise control over entry points and real-time monitoring. Trust us for robust, customizable access control that enhances security and efficiency.



# ACCESS CONTROL

## Tripod and Turnstiles

We offer high-quality tripod and turnstile solutions for controlled and secure access. Our durable systems ensure smooth entry management while enhancing security in high-traffic areas. Trust us for reliable, efficient access control solutions tailored to your needs.



## Automatic Barrier System

We provide state-of-the-art automatic barrier systems for efficient and secure access control. Our solutions offer smooth, automated operation to manage vehicle entry and exit with ease. Trust us to deliver reliable and effective barriers for enhanced security and convenience.



## Road Blockers & Hydraulic Bollard

We offer advanced road blockers and hydraulic bollards to ensure robust security and vehicle control. Our systems provide reliable, automated solutions for managing access and preventing unauthorized entry. Trust us for durable and effective security measures that safeguard your property.

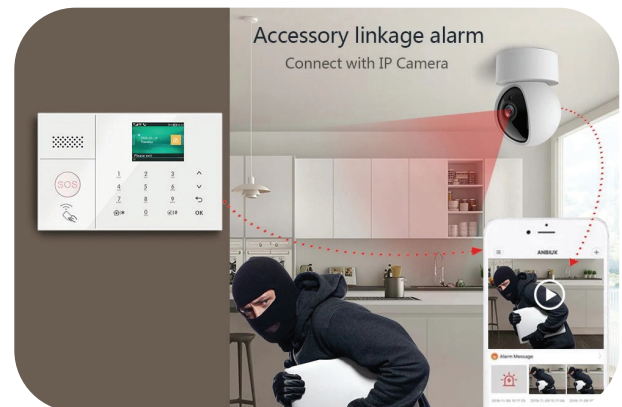




# ACCESS CONTROL

## Burglar Alarm Systems

We provide cutting-edge burglar alarm systems to protect your property from unauthorized intrusions. Our reliable solutions offer real-time alerts and comprehensive security coverage. Trust us to safeguard your home or business with advanced, efficient alarm technology.



## Archway Gate

We specialize in elegant and secure archway gate solutions for enhanced property access and aesthetics. Our systems combine stylish design with robust security features to control entry and exit effectively. Trust us to deliver functional and visually appealing gates that meet your security needs.




## Baggage Scanner

Guraba Engineering offer advanced baggage scanner solutions for thorough and efficient security screening. Our state-of-the-art technology ensures detailed inspection and rapid detection of potential threats. Trust us to provide reliable, high-performance scanners that enhance safety and streamline security processes.







# **Guraba PAVA Solution**

## PA/VA Solution

- Professional Audio Solution
- Industrial PA system Solution
- PA Solution for (shop, masque, restaurant etc.)
- Conference room solution
- Digital Public Address Solution
- IP-Public Address Solution



## Our Partner

**BOSCH****Honeywell****interM****MAJORCOM:****DSPPA****itc**



# PROFESSIONAL AUDIO SOLUTION

## Professional Audio Solution

We deliver top-tier professional audio solutions tailored for any environment. Our systems ensure crystal-clear sound quality, ideal for conferences, events, and commercial spaces. Trust us for expert installation and audio systems that elevate your sound experience.



## Industrial PA System Solution

We provide robust industrial PA system solutions designed for clear communication in demanding environments. Our systems ensure reliable, real-time announcements and emergency alerts across large facilities. Trust us for durable, high-performance audio solutions that enhance safety and efficiency.



## PA Solution for (shop, masque, restaurant etc.)

We offer tailored PA solutions for shops, mosques, restaurants, and more. Our systems provide clear, reliable sound for announcements, music, and communication in any setting. Trust us to enhance the atmosphere and functionality of your space with high-quality audio solutions.





# PROFESSIONAL AUDIO SOLUTION

## Conference Room Solution

We offer comprehensive conference room solutions designed for seamless collaboration. Our systems integrate high-quality audio, video, and presentation tools for efficient meetings. Trust us to create a modern, tech-enabled space that enhances communication and productivity.



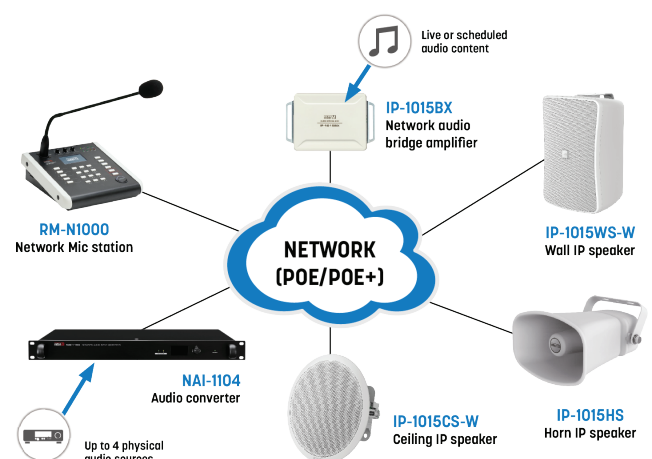
## Digital Public Address Solution


Guraba Engineering Limited offer cutting-edge digital public address solutions for clear and efficient communication. Our systems deliver high-quality audio for announcements and emergency alerts in any environment. Trust us for reliable, scalable solutions that enhance communication and safety.



## IP-Public Address Solution

Guraba Engineering Ltd. provide advanced IP-based public address solutions for seamless, networked audio communication. Our systems offer real-time, centralized control for efficient announcements and alerts. Trust us for scalable, reliable solutions tailored to your facility's needs.



The background image shows a curved wall composed of numerous small, square digital displays. Each display shows a different abstract, colorful image, creating a mosaic-like effect. The room has a modern, high-tech feel. In the foreground, there is a dark, reflective floor. To the right, a single larger digital display is mounted on a stand. The overall lighting is warm and orange-toned.

# **Guraba Smart Display Solution**





## Smart Display Solution

- Floor Standing Display
- Wall Mounted Advertising Display
- Interactive Flat Panel Display
- Transparent OLED Display Solutions
- Ceiling Hanging Display Solutions
- Slim Double Sided Display
- Outdoor Advertising Display
- Elevator Advertising Display
- Smart Class Solutions
- Industrial Panel Solutions





## Details of Smart Display

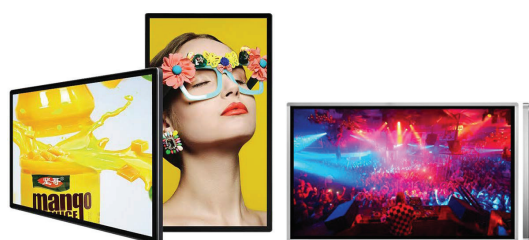
### ➤ Floor Standing Display

Enhance your brand visibility with our sleek and durable floor-standing display solutions. Designed to captivate attention and maximize impact in any environment.



### ➤ Wall Mounted Advertising Display

Showcase your content in style with our modern wall-mounted advertising displays. Engineered for clarity and durability, they deliver high-impact visuals in any space.



### ➤ Interactive Flat Panel Display

Transform collaboration with our interactive flat panel displays, combining touch technology and vibrant visuals. Perfect for dynamic presentations and seamless teamwork.



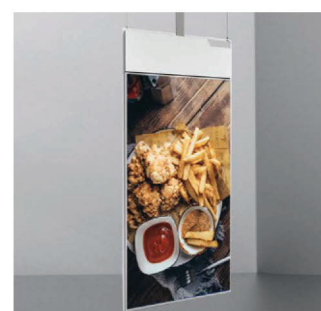
### ➤ Transparent OLED Display Solutions

Experience cutting-edge visuals with our Transparent OLED Display solutions, merging stunning transparency with vibrant colors. Perfect for creating futuristic, eye-catching displays.



### ➤ Ceiling Hanging Display Solutions

Maximize exposure with our ceiling hanging display solutions, offering 360-degree visibility for dynamic content. Ideal for capturing attention in large, open spaces.



### ➤ Slim Double Sided Display

Showcase content from every angle with our sleek, slim double-sided display. Designed for maximum visibility and style, it delivers high-quality visuals on both sides.



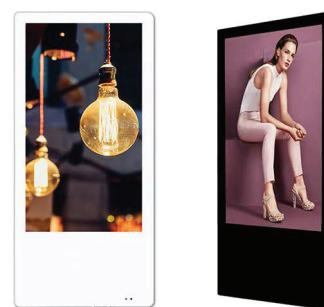
### ➤ Outdoor Advertising Display

Capture attention in any weather with our durable outdoor advertising displays. Built to withstand the elements while delivering bright, impactful visuals around the clock.



### ➤ Elevator Advertising Display

Engage your audience in transit with our elevator advertising displays. Compact and eye-catching, they deliver targeted Content in high-traffic, enclosed spaces.



### ➤ Smart Class Solutions

Enhance classroom engagement with our Smart Class display solutions, combining interactive technology and intuitive design. Foster collaboration and creativity, making learning more dynamic and effective.



### ➤ Industrial Panel Solutions

Maximize exposure with our ceiling hanging display solutions, offering 360-degree visibility for dynamic content. Ideal for capturing attention in large, open spaces.





# Guraba Managed Services



## Managed Service

**Guraba Engineering Facility Management Services** operates across major cities in Bangladesh, serving as a key partner for companies looking to outsource and hire workforce or services. We carefully select the right people who exceed customer expectations. Our team is regularly supervised, adheres to best practices, and maintains a high level of professionalism. To ensure a seamless experience for our clients, we have a robust backup resource pool for last-minute staff replacements and an emergency response team ready to act.

Our competitive services are flexible and customized to meet the unique needs of each client. We offer cost-effective solutions that provide excellent value for money. With a strong focus on compliance and safety, we enable our clients to concentrate on their core business. Whether you need assistance relocating to a new area or ensuring comfort in your home or office, we offer a comprehensive range of services to meet all your needs.

### 1. Maintenance Services

- AC Maintenance
- HVAC Maintenance
- Fire Detection & Protection System
- Electricians & Plumbers
- Carpenters & Painters
- Interior

### 4. Corporate Services

- Front Office/Receptionist
- Office Assistants
- Stores Assistants
- Messengers/Peons
- Drivers Support
- Lift Operators

### 2. IT Sector Services

- Network Infrastructure
- Cyber Security Service
- Support Service
- Print Service
- Cloud Infrastructure
- Software as a Service
- Data Analytics
- End User Service
- IT Consulting

### 5. Cleaning Services

- General Cleaning Services
- Office Care Services
- Building Care Services

### 3. General Services

- Recruitment Service
- Payroll Service
- Administration Service
- Logistics Support Service
- Project Management Service
- Consultancy



# MAINTENANCE SERVICES

## AC Maintenance

Guraba Engineering Ltd. offer AC maintenance service. We specialize in top-quality AC maintenance. Our expert technicians ensure your cooling systems run efficiently and reliably. Trust us to keep your environment comfortable all year round.



## HVAC Maintenance

We provide expert HVAC maintenance to keep your systems running at peak performance. Our skilled technicians ensure optimal efficiency and reliability for your heating and cooling needs. Rely on us for a comfortable and well-maintained environment year-round.



## Fire Detection & Protection

Guraba Specialize in advanced fire detection and protection services. Our expert team ensures your property is equipped with state-of-the-art systems for maximum safety and peace of mind. Trust us to safeguard your premises from fire hazards with precision and reliability.



# MAINTENANCE SERVICES

## Electricians and Plumbers

We are your trusted experts in electrical and plumbing services. Our skilled electricians and plumbers provide reliable, top-quality solutions for all your needs. Count on us for prompt, professional service that ensures your home or business operates smoothly and safely.



## Carpenters & Painters

We provide expert carpentry and painting services to enhance your space. Our skilled carpenters craft custom solutions, while our professional painters deliver flawless finishes. Trust us to bring your vision to life with precision and quality.



## Interior

We bring your interior design dreams to life. Our expert team delivers stylish and functional solutions to enhance your space. Trust us to create a beautiful and inviting environment tailored to your vision.





# IT SECTOR SERVICES

## Network Infrastructure

We specialize in designing and managing robust network infrastructure solutions. Our expert team ensures seamless connectivity and reliable performance for your business. Trust us to build and maintain a network that supports your operations efficiently and securely.



## Cyber Security Service

We offer comprehensive cyber security services to protect your digital assets. Our expert team provides proactive solutions to safeguard against threats and vulnerabilities. Trust us to keep your information secure and your operations resilient.



## Support Service

We provide expert IT support services to keep your technology running smoothly. Our dedicated team offers quick solutions and proactive maintenance for all your IT needs. Rely on us for dependable support and seamless operations.



# IT SECTOR SERVICES

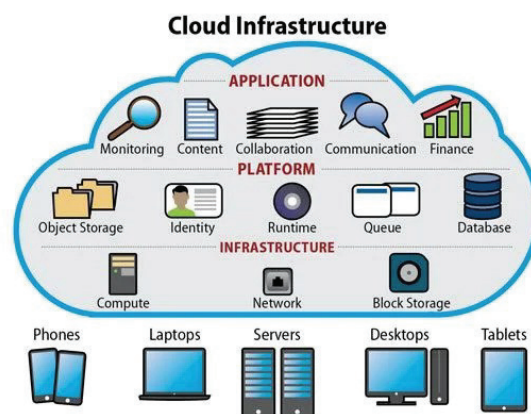
## Print Service

We deliver high-quality print services tailored to your needs. From custom documents to vibrant marketing materials like business cards, postcards, flyers, brochures, stationery, banner etc, our expert team ensures exceptional results. Trust us for reliable, professional printing that brings your ideas to life.



## Cloud Infrastructure

Infrastructure as a service (IaaS) is a type of cloud computing that lets you allocate your compute, network, storage and security resources on demand.



## Software as a Service

We Provide Software as a service (SaaS) allows users to connect to and use cloud-based apps over the Internet. Common examples are email, calendar-ing, and office tools (such as Microsoft Office 365). SaaS provides a complete software solution that you purchase on a pay-as-you-go basis from a cloud service provider.



# IT SECTOR SERVICES

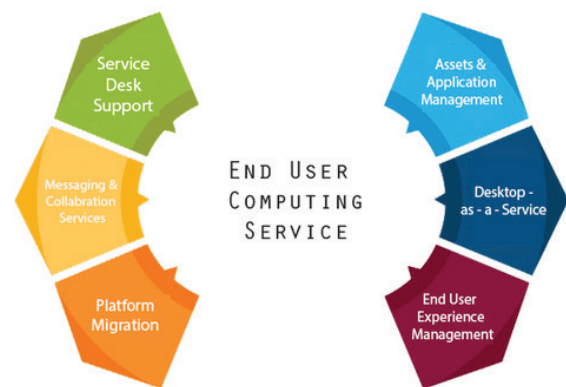
## Data Analytics

Data analytics converts raw data into actionable insights. It includes a range of tools, technologies, and processes used to find trends and solve problems by using data. Data analytics can shape business processes, improve decision-making, and foster business growth.



## End User Service

Ultimately, an end user is a person who will use a good or service. End users are consumers. They do not produce, sell, support, or maintain the product. These people often do not have the same technical understanding as the product's designers and developers.



## IT Consulting

Guraba Engineering design flexible IT strategies and architectures that will create the foundation to drive down cost, intelligently do more with less, improve processes and apply technology and resources effectively.





# GENERAL SERVICES

## Recruitment Service

We specialize in connecting businesses with top talent through our professional recruitment services. Our expert team ensures the right fit for your organization, streamlining the hiring process. Trust us to help you build a strong, skilled workforce.



## Payroll Service

Guraba Engineering Your trusted partner for efficient and accurate payroll services. We handle payroll management with precision, ensuring timely and compliant payments. Let us simplify your payroll process so you can focus on growing your business.



## Administration Service

We offer comprehensive administration services to streamline your business operations. Our expert team manages tasks efficiently, ensuring smooth and organized workflows. Trust us to handle your administrative needs with professionalism and attention to detail.



# GENERAL SERVICES

## Logistics Support Service

Guraba Engineering provide reliable logistics support services to ensure smooth and efficient operations. Our expert team handles everything from transportation to inventory management with precision. Trust us to keep your supply chain running seamlessly and on time.



## Project Management Service

We offer expert project management services to ensure your projects are completed on time and within budget. Our skilled team oversees every detail, from planning to execution, for seamless delivery. Trust us to bring your vision to life with precision and efficiency.



## Consultancy

Guraba Engineering Limited provide expert consultancy services tailored to help your business grow and succeed. Our experienced consultants offer strategic insights and customized solutions for your unique challenges. Trust us to guide you toward informed decisions and lasting success.



# CORPORATE SERVICES

## Front Office/Receptionist

Our Front Office/Receptionist services are designed to create a warm and professional welcome for your clients and visitors. We provide highly trained, courteous staff who excel in customer service, ensuring your front office runs smoothly and efficiently.



## Office Assistants / Boy

We offer office assistance for your organization. Our trained office boys will ensure the smooth completion of all those tasks that are general but crucial at your office such as dusting/cleaning, serving tea/coffee, transferring files.



## Store Assistants

Our Store Assistants service provides reliable support to keep your inventory in check, ensuring your operations run smoothly. From stocking shelves and managing supplies to assisting customers and maintaining a tidy store environment, our skilled team is dedicated to enhancing your store's efficiency and customer satisfaction.





# CORPORATE SERVICES

## Messengers/Peons

We provide reliable and efficient Peon services to support your business operations. Our team of professional peons handles a range of tasks, from office errands and document delivery to general assistance and maintenance.



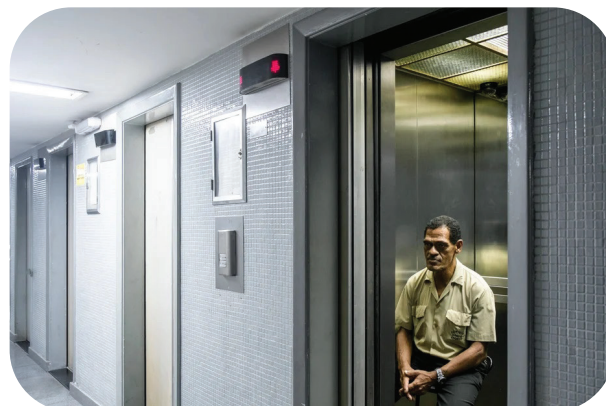
## Drivers Support

We offer top-tier drivers support services to keep your transportation running smoothly. Our professional drivers ensure punctual and reliable service for all your needs. Trust us to handle the driving, so you can focus on your business.



## Lift Operator

Introducing our lift operator service, your solution for expert lift operator services. Our skilled operators ensure smooth and safe lift operations for your building. Trust us to provide reliable, efficient service that keeps your operations running seamlessly.



# CLEANING SERVICES

## General Cleaning Services

Our service offers professional office and home cleaning, including the removal of deep stains. Our experienced providers use effective, safe chemicals to leave your office and home spotless and fresh.



## Office Care Services

Guraba Engineering trusted partner in maintaining a spotless and productive workplace. We specialize in professional office cleaning, ensuring a clean and healthy environment for your employees and clients. Our skilled team uses top-quality, eco-friendly products to deliver thorough cleaning services, from daily upkeep to deep cleaning.



## Building Care Services

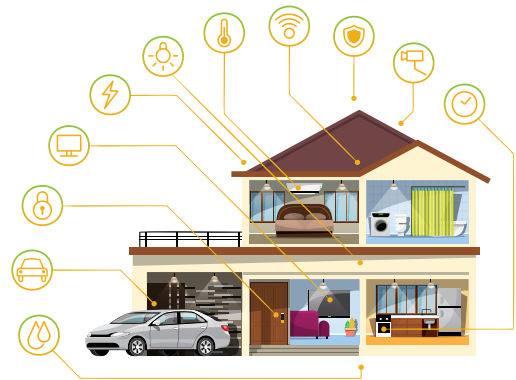
We specialize in comprehensive building care services tailored to meet your needs. From routine maintenance and deep cleaning to specialized care for high-traffic areas, our experienced team ensures your building remains in top condition.



## Home Automation

### We Provide Home Automation Solution -

- Voice-Activated Assistants
- Smart Lighting Solutions
- Energy Management
- Automated Security Systems
- Smart Home Appliances



## Parking Solution

Guraba Engineering provides smart Car Parking Solution as per client requirements.

### Advantage of Parking Solution-

- Superior Technology
- Better parking experience
- Increased Protection
- Reduced traffic and pollution
- Easy implementation and management
- Cost-effective



## Interactive Display Solution

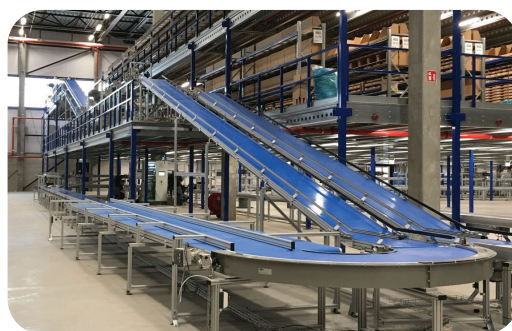
Guraba Engineering provide interactive display supply, installation and commissioning as per client requirements.





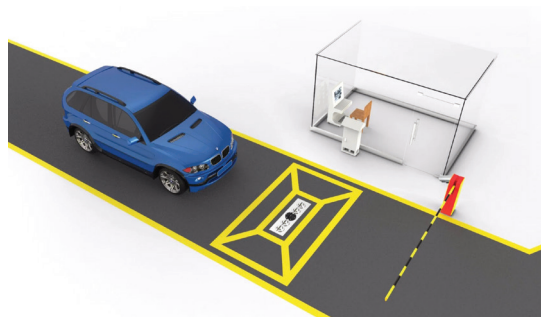
## Conveyor Belt

Guraba Engineering provides conveyor belt supply, installation, and commissioning tailored to meet client requirements.



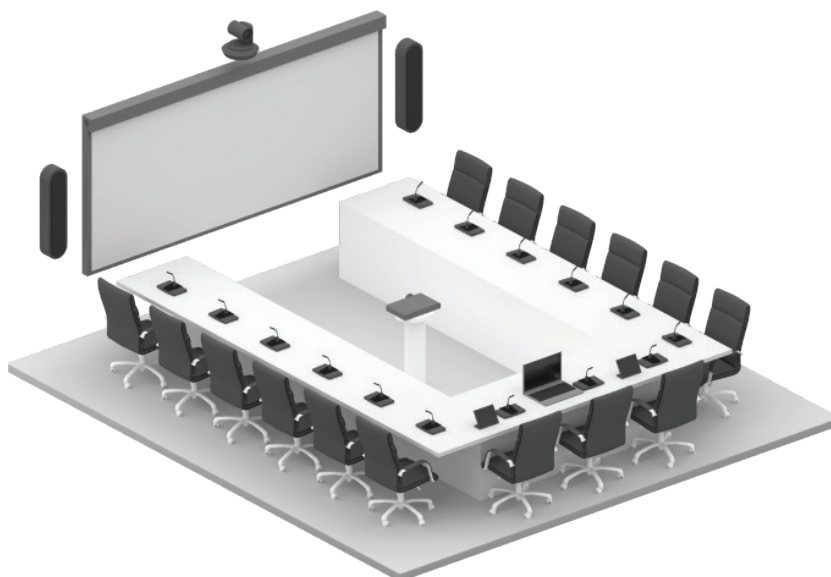
## Under Vehicle Inspection System

We offer advanced Under Vehicle Inspection Systems (UVIS) for thorough and efficient security screening. Our technology ensures real-time detection of threats by providing clear, detailed images of vehicle undersides. Trust us to enhance your security measures with reliable and precise inspection solutions.



## Conference Room Solution

We pride ourselves on being one of the premier providers of video conferencing solutions in Bangladesh. We specialize in delivering high-quality video and audio conferencing systems that meet the diverse needs of businesses, educational institutions, and government agencies.



# PARTNER & ASSOCIATES

Fire Detection & Security System



**BOSCH**

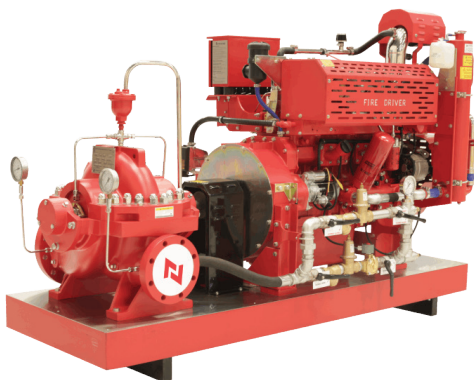


 **HOCHIKI**



# PARTNER & ASSOCIATES

## Fire Protection System





# PARTNER & ASSOCIATES

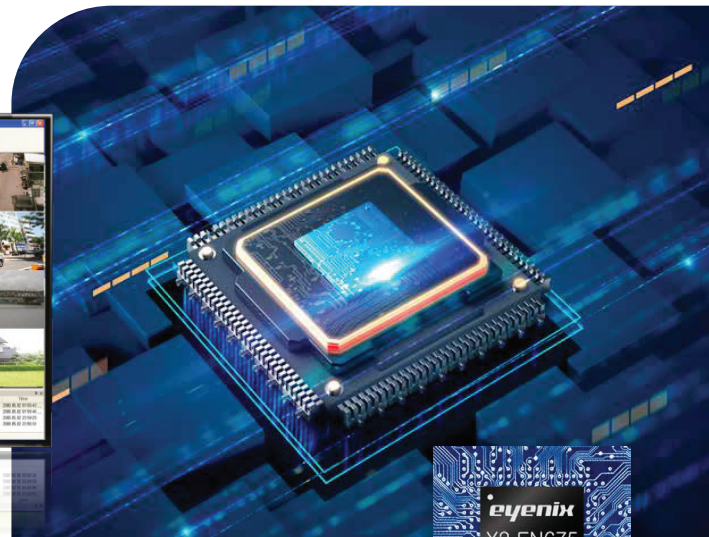
## Surveillance Solution

# WEBGATE



### Central Monitoring Software

Manage up-to 64,000 Cameras

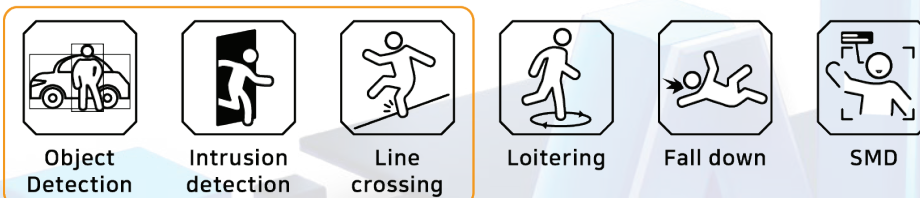


**KOR SoC**

\*SoC : System on Chip



### Basic Ai Features



Made in **KOREA**

★★★★★  
**NDAA**  
COMPLIANT

★★★★★  
**TAA**  
COMPLIANT



# PARTNER & ASSOCIATES

## Fire Sprinklers & Fire Suppression Equipment

- Flexible Sprinkler Hose & Accessories
- Sprinkler Heads
- Isolation Valves
- Check Valves & Strainers
- Alarm Valves (System Control Valves)
- Pressure Reducing & Relief Valves
- Residential Sprinkler Systems
- Grooved Couplings and Fittings
- Electrical Switches: Water flow & Pressure
- Wet & Dry Risers and Hose Reels
- Pump Room Equipment
- Zone Assemblies & Test and Drain Valves
- Fire Hydrants
- Lumi-Plugin
- Preaction, Deluge Valves & Nozzles
- CPVC Pipe & Fittings



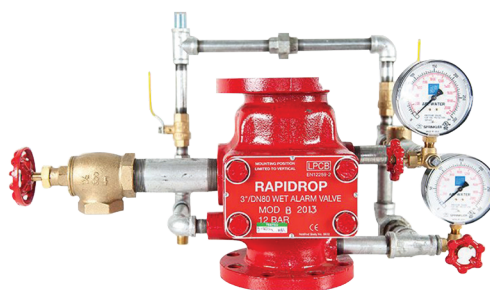
Concealed fire Sprinklers



Kent Fire Curtains



Monitored Residential  
Riser Test and Drain Valve



Rapidrop Wet Alarm Valve



Ebbitt Fire Pump





# PRODUCT & SERVICE

## Our Product & Service

- Design & Consultancy of Fire Safety & Security system (Fire Detection, Protection, CCTV, PA) and Electrical system.
- Fire Detection System.
- Fire Hydrant & Sprinkler System.
- Fire Gas Suppression System.
- Fire Rated Door.
- CCTV, Access Control and PA system.
- Substation items.
- Electrical items (BBT, Control Panel, MDB, SDB etc).
- Annual Maintenance Agreement.
- Industrial Safety (PPE).
- Fire Safety Plan.



# PRODUCT



# OUR VALUABLE CLIENT



BM Container Depot



Banglalink



Kenpark Regency



Best Western



Chevron Bangladesh



DESCO

# OUR VALUABLE CLIENT



FCI Group



Four H Group



Grameen Phone



Jann Group



Utah Group



Maf Footwear Ltd.



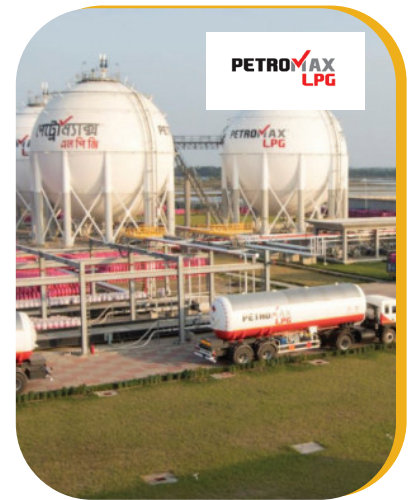
# OUR VALUABLE CLIENT



Mosharaf Group



Pacific Group



Petromax



Renata Limited



RSB Industrial Ltd



Shanta Group



# OUR VALUABLE CLIENT



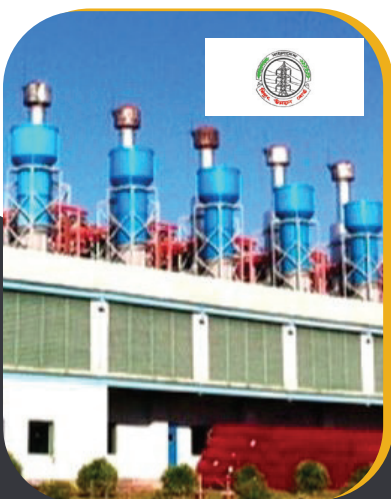
Marriott Hotel



Midland Power Plant



Univogue Group



Shahjibazar Power Plant



Comfit Composite Knit Ltd.



Standard Group

# OUR VALUABLE CLIENT



Smart Group



Merim Co, Ltd.



Whitex Garments(BD) Pvt. Ltd.



MZM Textile Ltd.



GH Haewae Co. Ltd.



SAMS Attire Ltd.



## CONTACT US

### Dhaka Head Office

- 📍 House-1286, (1st Floor), Road-10, Avenue-2, Mirpur DOHS, Dhaka-1216, Bangladesh
- ☎ +880 1710 629 168
- ✉ mahabur.rahman@guraba.com.bd  
arifur.rahman@guraba.com.bd  
raju@guraba.com.bd
- 🌐 [www.guraba.com.bd](http://www.guraba.com.bd)

### Chittagong Office

- 📍 Chowdhury Mansion Madraji Road, Navy Hospital gate, North Haliashahar, Chittagong.
- Warehouse**
- 📍 Dhaka, Chittagong.

### Sylhet Office-1

- 📍 House No: 32/1, Airport Road, East Choukidekhi, Ambar Khana, Sylhet.
- Sylhet Office-2**
- 📍 Zaynab House, Sherpur R/A area, Afruzganj bazar, Moulvibazar, Sylhet.